

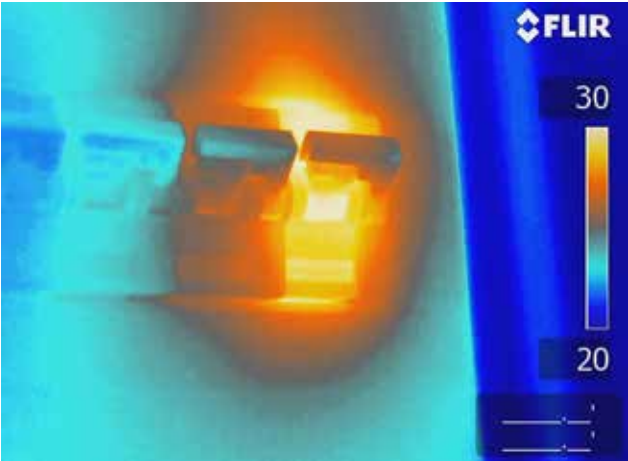
**FLIR ONLY
FEATURE**



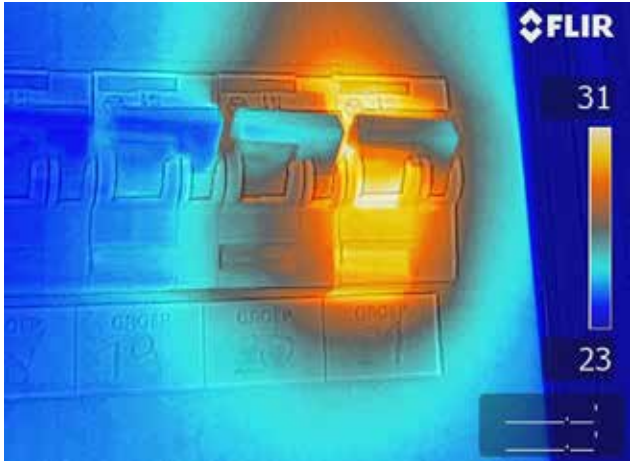
Multi Spectral Dynamic Imaging

Produces the best thermal images you can get

FLIR Systems has patented a high technological feature: Multi Spectral Dynamic Imaging (MSX®). This new feature produces an extremely detail rich image. MSX® produces better texture in a thermal image. Thanks to this new feature more anomalies can be detected, analyses can be done more detailed and conclusions can be drawn in a split second.



Thermal image of an overheated fuse.



Thermal image of the same overheated fuse, now using the MSX-setting. Note that the text below the fuse is readable, making it very easy to identify and repair the correct fuse at a later stage.

Multi Spectral Dynamic Imaging (MSX®)

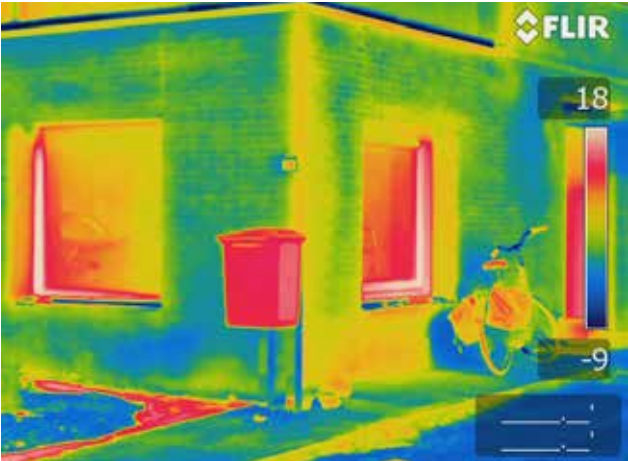
This new, patent-pending technology is based on FLIR's unique onboard processor that provides extraordinary thermal image details in real time. MSX® incorporates real-time thermal video enhanced with visible spectrum definition. It produces exceptional thermal clarity to highlight exactly where the problem is. MSX® ensures easier target identification without compromising radiometric data. The quality of the thermal images is excellent. There is almost no need anymore for a separate digital image.

FLIR's new MSX® embosses digital camera detail onto thermal video and stills.

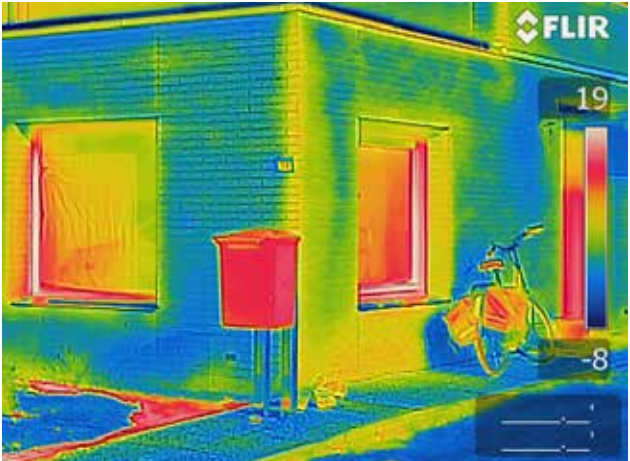
Instant results in real-time

Due to the new MSX® feature, thermal images look sharper, the orientation of the target will be done quicker, the reports are clutter-free and it ensures a faster route to solutions.

Users can see the results of MSX® technology directly on the touchscreen of the camera, in real time.



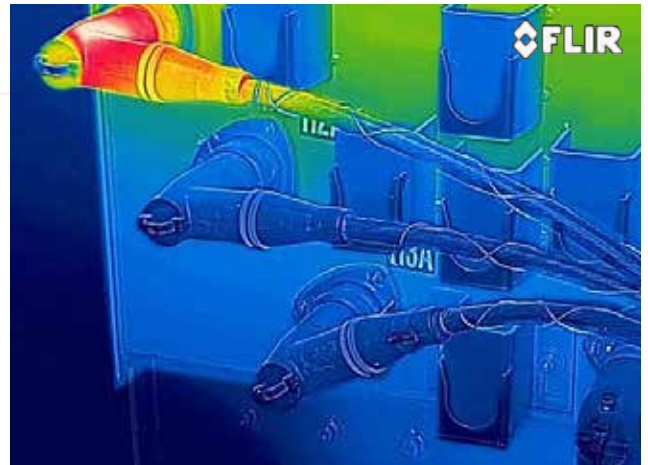
Thermal image of a building.



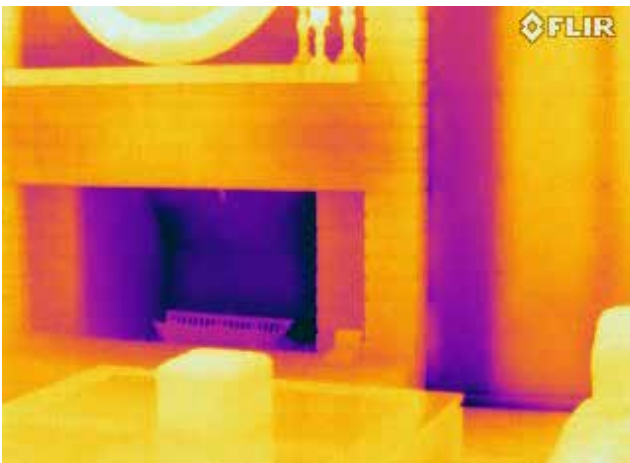
Thermal image of the same building, now using the MSX-setting. Note that more details are visible, making it easy to locate ventilation grids and see brick structure. The MSX feature gives depth to your thermal image.



Thermal image of an overheated connection



Thermal image with MSX of the same connection. More details are visible.



Thermal image of a fire place



Thermal image of a fire place with MSX. Note how the individual bricks are becoming clearly visible.

Images used for illustration purposes only.

FLIR MSX®: unique technology that is only available in the following FLIR Systems thermal imaging cameras:

- FLIR T400-Series / FLIR T400bx-Series
- FLIR T600-Series / FLIR T600bx-Series

See more detail and spot more anomalies with a thermal imaging camera that contains MSX®.



FLIR T400-Series



FLIR T600-Series

For more information, please contact:

FLIR Commercial Systems

Luxemburgstraat 2

2321 Meer

Belgium

Tel. : +32 (0) 3665 5100

Fax : +32 (0) 3303 5624

e-mail: flir@flir.com

www.flir.com

Your local distributor